

# Anatomy lectures, cranial nerves

*Abducent  
nerve*

*13 – 7- 2021*

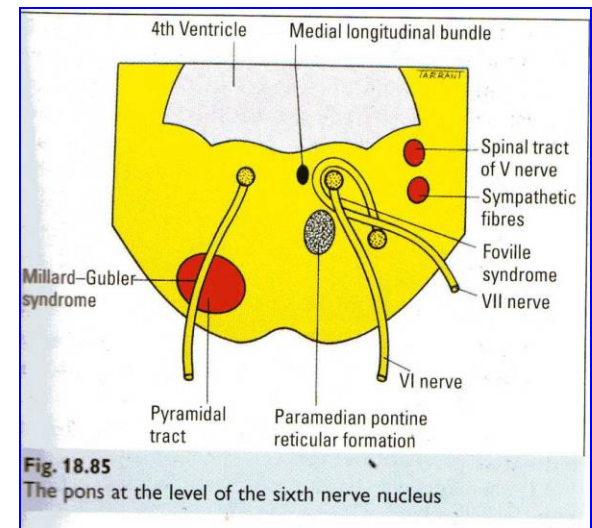
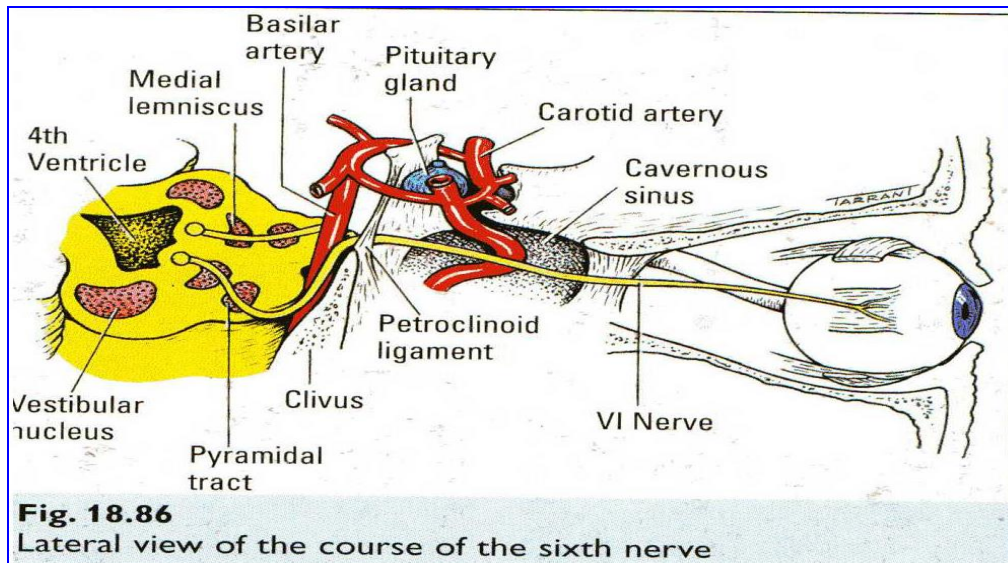


# Abducent Nerve

The nucleus of the 6th n. is situated in the floor of fourth ventricle.

It ascends farther through the sub arachnoid space along the surface of clivus.

It perforates the dura below the crest of the petrous portion of temporal bone about 2cm below the posterior clinoid process.



Then it enters the cavernous sinus, in the sinus the n. runs below & lateral to the carotid artery & may transiently carry sympathetic fibers from carotid plexus.

It passes through superior orbital fissure within the annulus of zinn & supply the LR muscle on it's ocular surface.

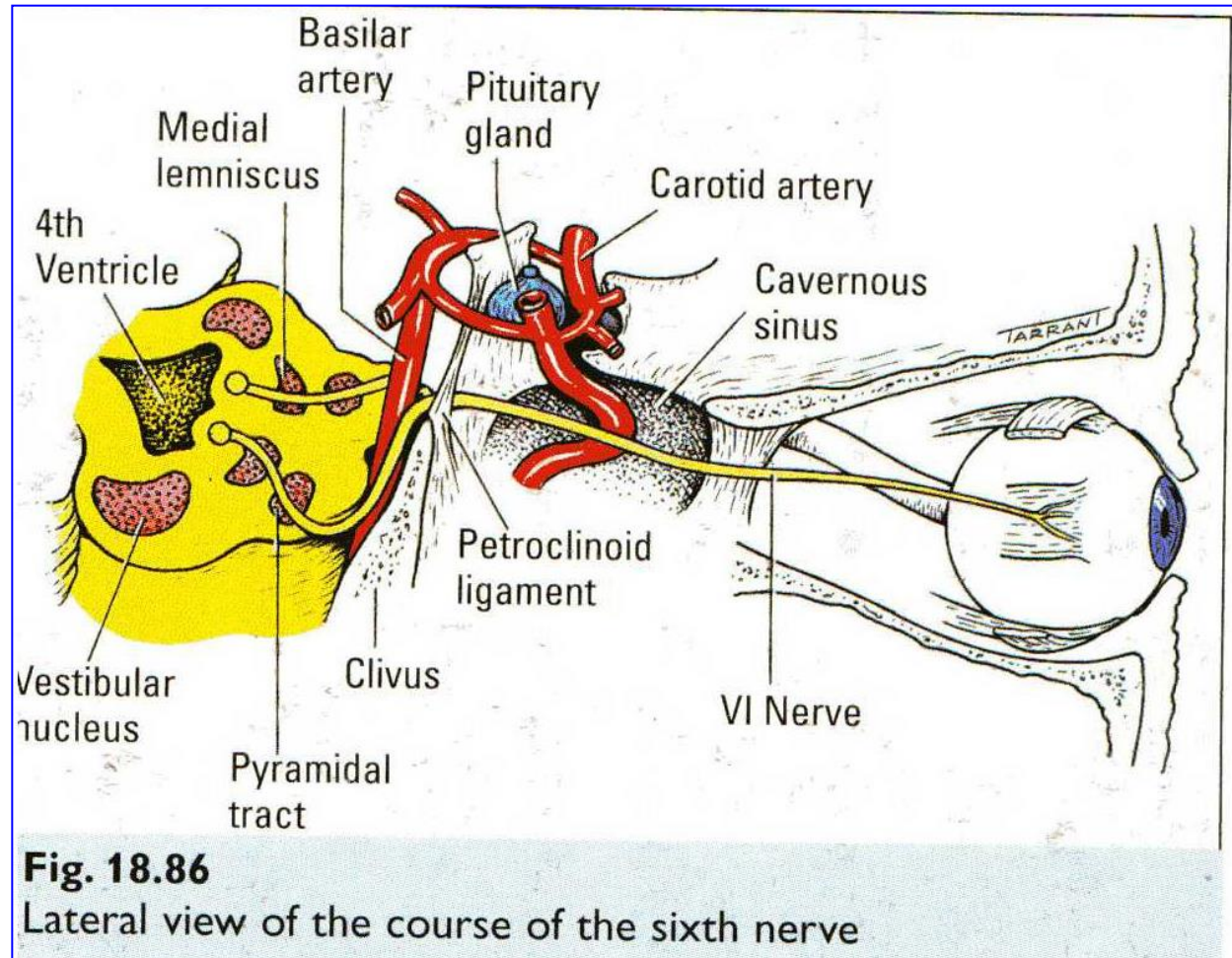
# part: Intracavernous part, Intraorbital

Intracavernous part: -

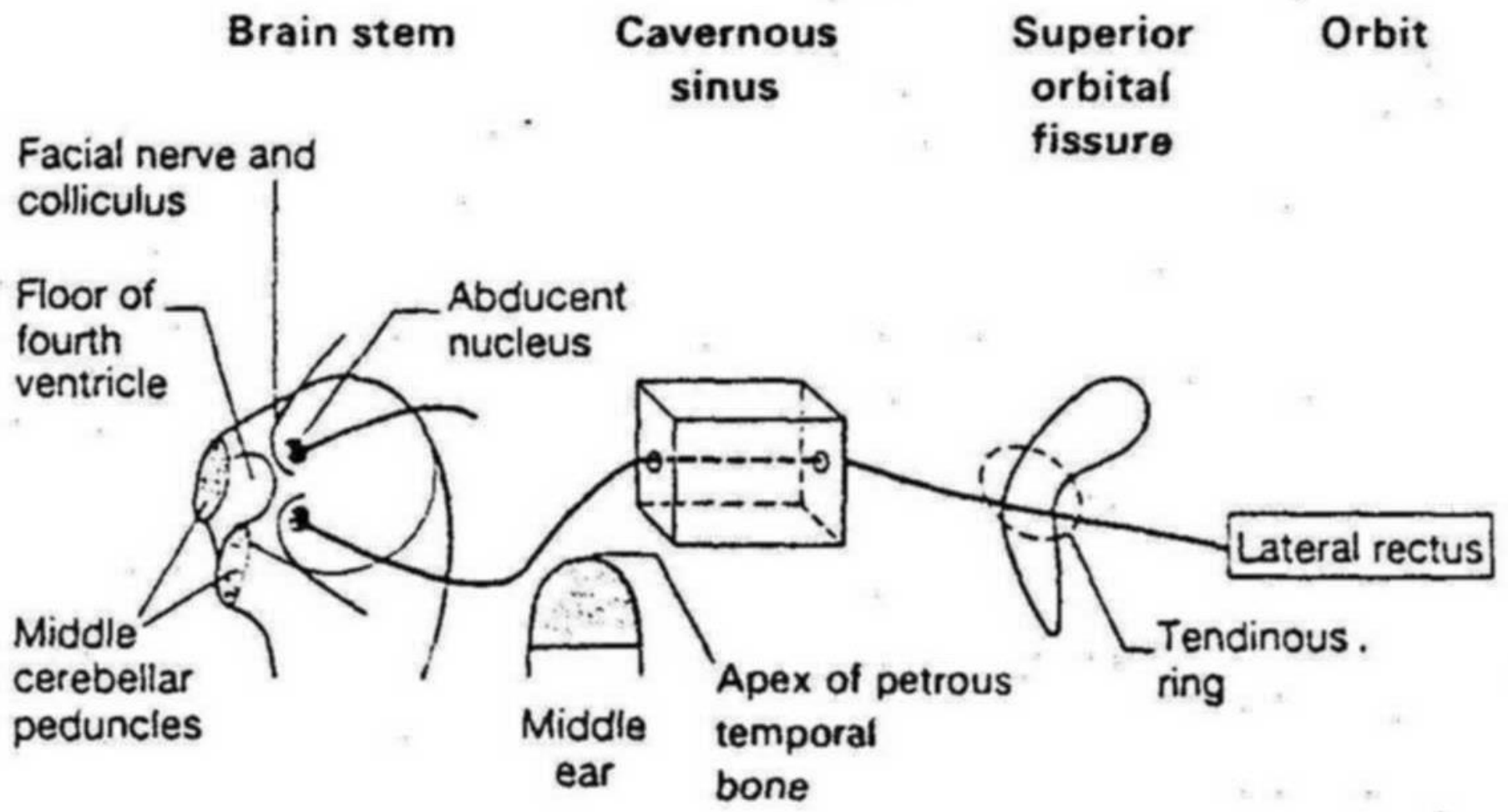
Pass forward within cav.sinus lies inferiolateral to the internal carotid artery **it receive sympathetic fiber from I.C.A later** leave 6 th nerve and join ophthalmic N.

Intraorbital part: -

Enter orbit through superior orbital fissure within **annulus of zinn** to innervat LR between 2nd division of 3rd N.



in cavernous sinus thrombosis. It enters the orbit through the superior orbital fissure inside the common tendinous ring and pierces the lateral rectus muscle (which it supplies).



***PREPERED BY :***  
***Prof. Dr. Talib Jawad***  
***DEAN OF COLLEGE OF MEDICINE***  
***DYIALA UNIVERSITY***

